

The Partnership Press

UMF's Partnership for Civic Advancement: University—Community—Students—Working Together to Benefit All
 May 2014 • Volume 1, Issue 2

Maine Campus Compact Recognizes UMF's Partnership

The University of Maine at Farmington's Partnership for Civic Advancement was presented with the President's Leadership Award by the Maine Campus Compact during their annual Awards Ceremony on April 30, 2014, at the Statehouse Hall of Flags in Augusta.



From Left to Right: UMF Representatives Lorraine Pratt, Grants Writer and Partnership for Civic Advancement, and Celeste Branham, Vice President for Student and Community Services with President Don Tuski, Maine College of Art and Maine Campus Compact Board Member and Sally Slovenski, Executive Director, Maine Campus Compact.

Established in 1994 and hosted at Bates College, Maine Campus Compact (MCC) is a statewide coalition of 17 college and university presidents working to build strong communities and a more just democratic society by developing students' citizenship and problem solving skills through community-based learning.

Every two years, each member president may nominate a campus department or program to be recognized with this award for its exceptional contributions to community service, service learning, and/or civic engagement efforts on their campus. In accordance with Maine Campus Compact's award criteria, recipients of the bi-annual President's Leadership Award demonstrate the use of service as an integral part of the college experience for students, create innovative approaches to campus-based efforts to address community issues, integrate these strategies into their institutional structure, and deeply impact both their campus and the surrounding community.

"In the two short years that the Partnership for Civic Advancement has been active, it has made a significant difference to individual students, community organizations and to the fabric of UMF," said Kathryn A. Foster, UMF president. *"The first of its kind in the University of Maine System, it shows how students can provide valuable service throughout the community while gaining professional experience and confidence in the field."*

Ms. F. Celeste Branham, Vice President for Student and Community Services at UMF and Director of the Partnership for Civic Advancement, noted that UMF's Partnership "is a pioneering example of campus-community collaborations, and is one that yields measurable benefits for our students and the community alike." Launched in 2011 to engage students in internships and other meaningful community-based, experiential learning activities, Branham reported that the Partnership experienced growth of more than 300% during its second year of operations.



2014 Maine Campus Compact Award Recipients

Maine Campus Compact also annually recognizes faculty members who have made public service an integral part of their teaching through presentation of Donald Harward Faculty Awards for Service-Learning Excellence. Students from member institutions who have been actively involved in turning their campuses and communities into places of democracy are also recognized each year with Maine Campus Compact Heart and Soul Awards.

Maine Campus Compact is an affiliate state office of Campus Compact, a national organization encompassing more than 1,100 college and university presidents and their campuses. These institutions, and the approximately 6 million students they represent, are dedicated to promoting community service, civic engagement, and service learning in higher education. More than 15,000 student volunteers at Maine Campus Compact member campuses provide some 1.6 million hours of community service annually, which has an economic impact of more than \$25 million a year.

Meet the Interns—at work in our Community

During the Fall 2013 and Spring 2014 semesters, the following 26 students participated in an internship through UMF's Partnership for Civic Advancement:



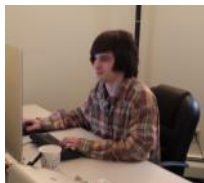
Keegen Ballard—Senior, graduated May 17, 2014, from Manchester, Maine; majored in Environmental Policy and Planning—Community Business Assessment Intern for the Town of Kingfield, Maine, Summer and Fall 2013, and Spring 2014.

Bianca Bourgault—Senior, graduated December 2013, from Jay, Maine; majored in English—Grant Writer and Research Intern for the American Red Cross of Maine, Fall 2013.



Tyler Brown—Senior, graduated May 17, 2014, from Ayer, Massachusetts; majored in Outdoor Recreation and Business Administration—Operations and Marketing Intern for Titcomb Mountain, Winter 2013 and Spring 2014.

Tyler Buck—Junior, from Jay, Maine; majoring in Computer Science—Website Designer and Developer with Aptuitiv, Spring and Summer 2014.



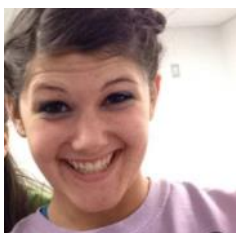
Chantal Duchaine—Junior, from Farmington, Maine; majoring in Business Economics—Economic Analysis Intern for Franklin County Adult Education, Fall 2013.

Joshua Everett—Senior, graduated May 17, 2014, from Skowhegan, Maine; majored in Outdoor Recreation and Business Administration—Ski and Ride School Intern with Saddleback Ski Resort, Winter 2013 and Spring 2014.



Photo by Joshua Everett

Jordan Graffam—Senior, graduated December, 2013, from Limerick, Maine; majored in Business Economics—Online Media Marketing Intern for the Franklin County Chamber of Commerce, Fall, 2013.



Cassandra Kittredge—Junior, from Mirror Lake, New Hampshire; majoring in Environmental Policy and Planning—Project Intern for the Franklin County Asset Mapping Project, Spring and Summer 2014, and Land Licensing and Enforcement Program Intern with Maine Department of Environmental Protection, Summer 2014.

Joseph LeClair—Junior, from Scituate, Rhode Island; majoring in Environmental Policy and Planning - Project Intern for the Franklin County Asset Mapping Project, Spring and Summer 2014.



Kalvin Lord—Senior, graduated May 17, 2014, from Norridgewock, Maine; majored in Outdoor Recreation and Business Administration—Promotions, Events, and Marketing Intern for Saddleback Ski Resort, Winter 2013 and Spring 2014.

Taylor McCafferty—Senior, graduating May 2015, from Woodville, Maine; majoring in English—Marketing/"Guide to Franklin County" Intern for the Franklin County Chamber of Commerce, Spring 2014.



Joseph Menyo—Junior, from North Attleboro, Massachusetts; majoring in both Environmental Policy and Planning and in Political Science—Project Intern for the Franklin County Asset Mapping Project, Spring 2014.



Nora Morris—Senior, graduated May 17, 2014, from West Islip, New York; majored in Environmental Policy and Planning and minored in Political Science—Project Intern for the Franklin County Asset Mapping Project, Summer and Fall 2013.

Kendra Newman—Junior, from Milo, Maine; majoring in Psychology and minoring in Art History—Grant Project Evaluation Assistant for Western Mountains Alliance, Fall 2013.

Shane Nicely-Luker—Senior, graduating December 2014, from Farmington, Maine; completing an Individualized major—Interpretive Farm Assistant and Male Interpreter at Washburn-Norlands Living History Center, Fall 2013.

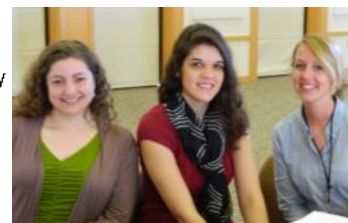


Stuart Shriner—Senior, graduated May 2013, from Kennebunk, Maine; majored in Outdoor Recreation and Business Administration—Program and Operations Intern with the Kennebunk Parks and Recreation Department, Fall 2013.



Kory Scarponi—Senior, graduated May 17, 2014, from Bath, Maine; majored in Outdoor Recreation and Business Administration—Snow Reporter at Sunday River Resort, Winter 2013 and Spring 2014.

Keisha Scott—Senior, graduated May 17, 2014, from Eastport, Maine; majored in Rehabilitation Services—Franklin County Education and Outreach Intern for Safe Voices, Spring 2014. *(Keisha is in the center.)*



Anna Soule—Senior, graduated May 17, 2014, originally from Chaparral, New Mexico, now residing in Kingfield, Maine; majored in Business Psychology with minors in Theatre and Music—Development Intern at Western Maine Community Action, Summer and Fall 2012, and Marketing and Social Media Intern at Franklin County Adult Education, Fall 2013.



Lacey Tatosky—Senior, graduated May 17, 2014, from Sanford, Maine; majored in Psychology—Elder Services Resource Directory Intern at Western Maine Community Action, Summer 2013, and Counseling and Therapy Intern with the Guidance Counselor and Psychotherapist at Belgrade Central Elementary School, Spring 2014.

Dylan Toothaker—Junior, from Temple, Maine; majoring in Outdoor Recreation and Business Administration—Ski Technician and Sales Associate Intern at Northern Lights Hearth and Sports, Winter 2013 and Spring 2014.



Tobey Tozier—Senior, graduated May 17, 2014, from Jefferson, Maine; majored in Art Administration and Visual and Performing Arts with an Art and Visual Culture concentration—Assistant Web Development Intern at the Ski Depot, Spring, Summer and Fall 2013.

Katherine Turpen—Junior, from Windham, Maine; majoring in History and Secondary Education with a focus on Social Studies—Archival Intern for the Temple Historical Society, Fall 2013 and Spring and Summer 2014.



Zachary Vincent—Junior, from Standish, Maine; majoring in Business Psychology—Marketing and Social Media Intern for Franklin County Adult Education, Spring and Summer 2014.

Jeremy Vroom—Junior, from Bangor, Maine; majoring in Geography—Project Intern for the Franklin County Asset Mapping Project, Summer and Fall 2013, and Summer 2014 intern with the City of Lewiston, Maine, Department of Planning and Code Enforcement.



Kevin Walsh—Senior, graduated May 17, 2014, from Milton, Massachusetts; majored in Outdoor Recreation and Business Administration—Terrain Park Intern at Sugarloaf, Spring 2014. *(Kevin is on the right, holding the rake over his head.)*

FEATURED STUDENT INTERNS

Prior to graduating on May 17, 2014, **Keegen Ballard** had continued his work as the Community Business Assessment Intern for the **Town of Kingfield** for three consecutive semesters.

An Environmental Policy and Planning major with a concentration in Economics, Keegen has a strong interest in town and regional development and is planning to make a career in city management. Working with Town staff and Kingfield's Economic Development Consultant, Rodney Lynch, Keegen's internship work has been critical as the Town planned to undertake two major projects—a much needed sewer system upgrade and downtown infrastructure improvements in conjunction with the State's Route 27 corridor project.

Keegen's work involved completing a comprehensive business assessment for the Town that included updating of all employer/employee information and the tax map for all businesses in Kingfield, and compiling the necessary data and taking photographs needed to prepare releases and presentations for public forums and the Town Selectmen, as well as assisting with the preparation of a Community Development Block Grant application and the required environment review for the sewer system upgrade project.



Leanna Targett, Administrative Assistant for the Town of Kingfield and Keegen Ballard.

A student worker at UMF's Fitness and Recreation Center for the past 3 years, Keegen has also volunteered for the Manchester Youth League baseball program, has helped make and maintain snowmobile trails, and has worked at the Good Shepherd Food Bank in Auburn, Maine.

Since last summer, five students have worked as interns with the **Franklin County Asset Mapping Project** under the guidance of Dr. Matthew McCourt, Associate Professor of Geography at UMF: **Nora Morris, Jeremy Vroom, Cassandra Kittredge, Joseph LeClair, and Joseph Menyo.** *(The summary profiles of these students are included in the "Meet the Interns" story on pages 2 and 3.)*

This project represents a collaboration among the Franklin County Network of Networks, which is a regional network involving the Franklin County Tourism Network, High Peaks Creative Council, and the Franklin County Community College Network. Those involved in the Asset Mapping Project are identifying, mapping and analyzing assets in the arts and culture, outdoor recreation, etc., in order to compile a comprehensive picture of the various assets and resources this region has to offer. Through this effort, the Network of Networks seeks to foster collaborative efforts among the networks existing in our regional community and, as a result of such collaboration, accomplish more for our community and strengthen one another in the process. The primary goal of this project is to develop a sound and sustainable economic development strategy for Franklin County.

EVENTS CALENDAR

May 2014

May (Continued)

June 2014

September 2014

2nd Student Intern Orientation & Training (Mandatory)
11:45 a.m.—1:00 p.m.
CR 123, Olsen Student Center

15th Student Intern Orientation & Training Makeup Session
12:00 noon—1:00 p.m.
CR 123, Olsen Student Center

30th Welcome ME Quality Service Training Certificate Due

2nd Convocation
9:00 a.m.
Dearborn Gymnasium

14th Community Partner Orientation & Training
8:00—10:00 a.m.
NDH C, Olsen Student Center

17th Commencement
10:30 a.m.—Behind Olsen Student Center (in the event of rain, to be in the Fitness and Recreation Center)

June –July & August 2014

Intern Gatherings
One to be scheduled each Month—Dates, Times and Locations—To Be Announced

3rd Fall Semester Classes Begin

5th UMF Student Employment and Volunteer Fair
11:00 a.m.—1:00 p.m.
Olsen Student Center

COMMUNITY PARTNER PROFILES

Serving Franklin County, Maine and the communities of Livermore and Livermore Falls, the mission of the **United Way of the Tri-Valley Area** is to “unite people and resources to improve lives and build a strong and healthy community.” The United Way fulfills its mission “by identifying local needs and addressing their root causes, raising funds to meet those needs, and collaborating on local initiatives that create a measurable difference in Greater Franklin County.”

Through funding Community Partners and local initiatives, the United Way’s goals are to respond to emergencies, meet basic human needs, reduce poverty, increase independence and financial stability, improve health, decrease sexual and domestic violence, and develop other long-term prevention strategies to improve quality of life.



Some of the United Way’s community initiatives include:

The Community Energy Challenge - a volunteer-based, low-cost winterization strategy of making interior storm window panels to keep homes warmer during the harsh winter months and encourage homeowners to make positive changes in their energy consumption.

Western Maine CASH Coalition - part of a statewide network of community-based programs offering free tax preparation and asset-building services to low and moderate income families to help them move from financial uncertainty toward financial security.

The Pantry Project - a joint venture of United Way of the Tri-Valley Area, HealthReach RSVP, local businesses, and area food pantries to ensure food pantry shelves are filled to meet the needs of the hungry.

Stuff the Bus – an annual project to collect and distribute donations of school supplies to children from low income families.

Part of an international system working to achieve the common good in our communities, the United Way also operates the Franklin County Volunteer Network. For more information, please visit their website at: <http://www.uwva.org/>



The **Maine Department of Environmental Protection (MDEP)** is responsible for protecting and restoring Maine’s natural resources and enforcing the state’s environmental laws through licensing, enforcement and oversight of various land development activities.

Legislative mandate directs Maine’s Department of Environmental Protection to prevent, abate and control the pollution of the air, water and land. Within this mandate is the charge to preserve, improve and prevent diminution of the natural environment of the State. The Department is also directed to protect and enhance the public’s right to use and enjoy the State’s natural resources. In fulfilling these charges, the Department administers programs, educates the public, and makes regulatory decisions that contribute to the achievement of its mission.

The Maine Department of Environmental Protection engages in a wide range of activities. It makes recommendations to the Legislature regarding measures to prevent, minimize and eliminate environmental pollution; issues licenses; initiates enforcement actions; and, provides information and technical assistance. The Department serves as the main link to the federal government on environmental issues and administers some federal programs.

The Department is composed of the Commissioner’s office and three bureaus – Air Quality, Land and Water Quality and Remediation & Waste Management. The Department maintains offices across the state to provide accessibility to municipalities and the public and to enable staff to conduct necessary field work. In addition to their Central Office in Augusta, offices are located in Presque Isle, Bangor and Portland.

For more information, please visit their website at: <http://www.maine.gov/dep/index.html>

UMF’s Partnership for Civic Advancement gratefully acknowledges Bangor Savings Bank Foundation, Davis Family Foundation, and the Franklin County Fund and Western Mountains Fund at the Maine Community Foundation for their support.

Like us on:



The Partnership for Civic Advancement

149 Quebec Street • Farmington • Maine • 04938
Telephone: 207-778-7593 • Email: pca@maine.edu
Website: pca.umf.maine.edu/

Join us on:

